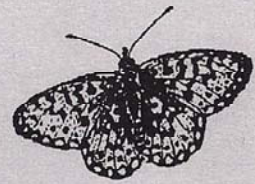




Staffordshire

Wildlife Trust

North West Group



Chairman – David Lovatt Telephone: 01782 680250 Email: lovattdm@aol.com

Visit us at www.staffswildlife.org.uk

Please note that the village of Maer is having a new sewerage system. Work starts in the Autumn & will continue well into 2012. This means that the approach to Maer is going to be so difficult that we will be using Ashley Memorial Hall this season instead of Maer Village Hall.

Friday 16th September- 7.30pm - Eccleshall Parish Room
An Evening with Bees – An illustrated talk by Ron Rock
Kindly sponsored by James du Pavey—Estate Agents



Friday 14th October - 7.30pm **Ashley Memorial Hall**
Autumn and Winter Watch – An illustrated talk by David Taylor
Kindly sponsored by Bethan Ward & The Kings Arms



Friday 21st October - 7.30pm - Eccleshall Parish Room
Cannock Chase – An illustrated talk by June Jukes
Kindly sponsored by The IT Centre



Friday 11th November -7.30pm – **Ashley Memorial Hall**
Some Flowers of Nepal – An illustrated talk by Chris Sanders



Friday 18th November- 7.30pm - Eccleshall Parish Room
Discovering Scotland's Western Isles – An illustrated talk by Nick Martin
Kindly sponsored by Perry's Butcher



Friday 9th December -7.30pm – **Ashley Memorial Hall**
Birds of Prey in Staffordshire – An illustrated talk by Sophie Jordan
Kindly sponsored by Perry's Butcher



Friday 20th January 2012 - 7.30pm - Eccleshall Parish Room
Can a Tree live 5000 years? – An illustrated talk by Dr Peter Taylor



Friday 10th February - 7.30pm – **Ashley Memorial Hall**
Polecats & Pine Martins – An illustrated talk by Derek Crawley



Friday 17th February – 7.30pm – Eccleshall Parish Room
Conservation of Flagship Species – An illustrated talk by Bernard Wright



Friday 9th March – 7.30pm – **Ashley Memorial Hall**
Nature in Focus – An illustrated talk by Jim Almond



Friday 16th March- 7.30pm - Eccleshall Parish Room
Natural History of Aqualate Mere – An illustrated talk by Mel Brown



Friday 20th April - 7.30pm - Eccleshall Parish Room
Seychelles and their Wildlife – An illustrated talk by Ken Webb
Kindly sponsored by The Chip Shop, Eccleshall



The meetings are open to all. Admission is £2.50, which includes refreshments. Eccleshall church Hall is on the left as you enter the church grounds. To find Ashley Memorial Hall, turn into Pinewood Road off the A53 & then immediately left. A warm welcome awaits you at both Eccleshall and Ashley.